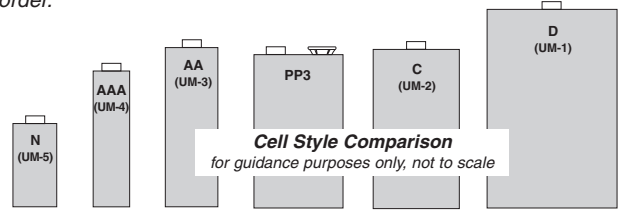
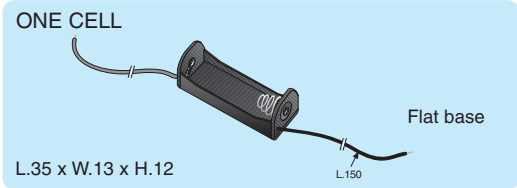


A broad range of cost-effective, moulded battery holders in popular arrangements of cell size and configuration. An option of high grade material on selected types is shown on page 24. Body colour black. Clearly marked with battery orientation and/or polarity. Available with wire lead, pcb pin, solder tag or press stud terminals. Mounting holes provided on flat base holders except N and AAA one cell. Other options including alternative cell configurations and polarity protection are available to special order.

- ◆ Covers six cell sizes
- ◆ House up to eight batteries
- ◆ Choice of terminal styles



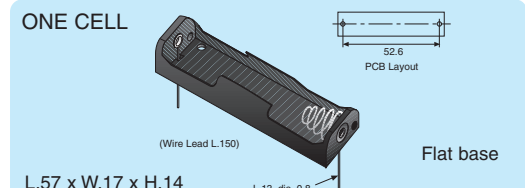
**N CELL**



**Termination Type**  
Wire Leads

**Manf. Part No. & anglia Order Code**  
**TCH1N1W**

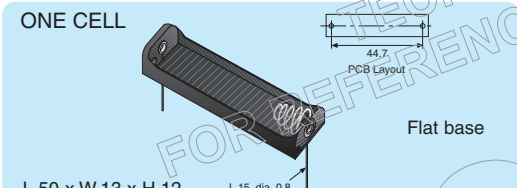
**AA CELL**



**Termination Type**  
PCB Pins (illus.)  
Solder Tags  
Wire Leads

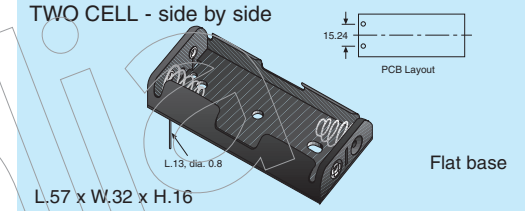
**Manf. Part No. & anglia Order Code**  
**TCH1A21P**  
**TCH1A21T**  
**TCH1A21W**

**AAA CELL**



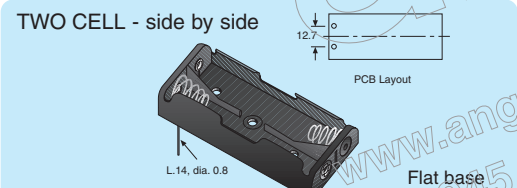
**Termination Type**  
PCB Pins

**Manf. Part No. & anglia Order Code**  
**TCH1A31P**



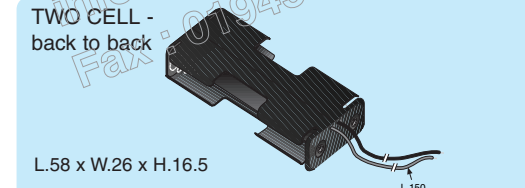
**Termination Type**  
PCB Pins (illus.)  
Press Studs

**Manf. Part No. & anglia Order Code**  
**TCH2A22P**  
**TCH2A22S**



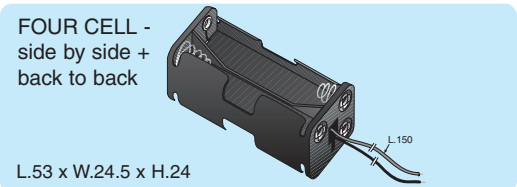
**Termination Type**  
PCB Pins

**Manf. Part No. & anglia Order Code**  
**TCH2A32P**



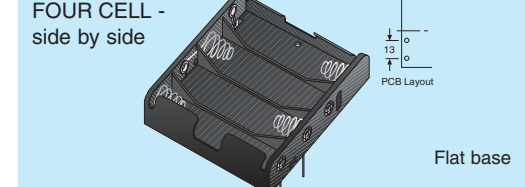
**Termination Type**  
Wire Leads (illus.)  
Press Studs

**Manf. Part No. & anglia Order Code**  
**TCH2A25W**  
**TCH2A25S**



**Termination Type**  
Wire Leads

**Manf. Part No. & anglia Order Code**  
**TCH4A37W**



**Termination Type**  
PCB Pins (illus.)  
Press Studs

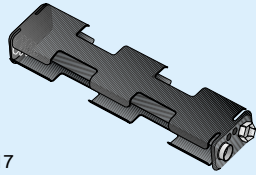
**Manf. Part No. & anglia Order Code**  
**TCH4A22P**  
**TCH4A22S**

All dimensions in mm

**PRESS STUD TERMINALS** see page 28 for suitable PP3 battery snaps

**AA CELL** *continued*

FOUR CELL -  
end to end +  
back to back

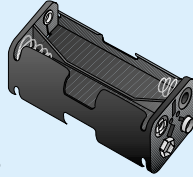


L.109 x W.26 x H.17

**Termination Type**  
Press Studs

**Manf. Part No. & Anglia Order Code**  
**TCH4A26S**

FOUR CELL -  
side by side +  
back to back

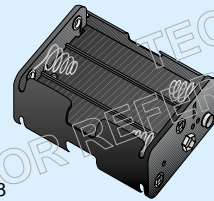


L.57 x W.31 x H.28

**Termination Type**  
Press Studs (illus.)  
Solder Tags

**Manf. Part No. & Anglia Order Code**  
**TCH4A27S**  
**TCH4A27T**

SIX CELL -  
side by side +  
back to back

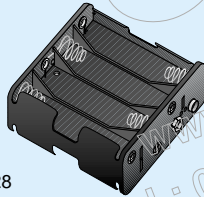


L.58 x W.45 x H.28

**Termination Type**  
Press Studs

**Manf. Part No. & Anglia Order Code**  
**TCH6A27S**

EIGHT CELL -  
side by side +  
back to back



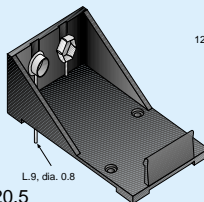
L.58 x W.63 x H.28

**Termination Type**  
Press Studs

**Manf. Part No. & Anglia Order Code**  
**TCH8A27S**

**PP3 CELL**

ONE CELL



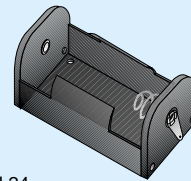
L.54 x W.30 x H.20.5

**Termination Type**  
PCB Pins

**Manf. Part No. & Anglia Order Code**  
**TPS3PM**

**C CELL**

ONE CELL



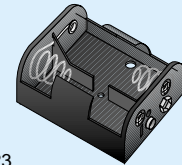
Flat base

L.58 x W.29 x H.24

**Termination Type**  
Solder Tags

**Manf. Part No. & Anglia Order Code**  
**TCH1C1T**

TWO CELL -  
side by side



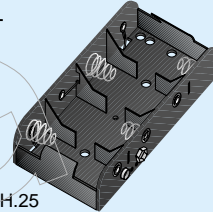
Flat base

L.62 x W.56 x H.23

**Termination Type**  
Press Studs (illus.)  
Solder Tags

**Manf. Part No. & Anglia Order Code**  
**TCH2C2S**  
**TCH2C2T**

FOUR CELL -  
side by side



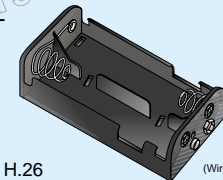
Flat base

L.59 x W.106 x H.25

**Termination Type**  
Press Studs (illus.)  
Solder Tags

**Manf. Part No. & Anglia Order Code**  
**TCH4C2S**  
**TCH4C2T**

FOUR CELL -  
end to end +  
side by side



Flat base

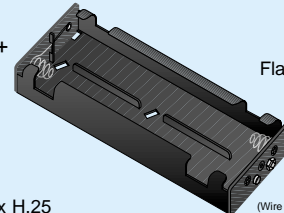
L.108 x W.54 x H.26

(Wire Lead L.150)

**Termination Type**  
Press Studs (illus.)  
Wire Leads

**Manf. Part No. & Anglia Order Code**  
**TCH4C3S**  
**TCH4C3W**

SIX CELL -  
end to end +  
side by side



Flat base

L.159 x W.57 x H.25

(Wire Lead L.150)

**Termination Type**  
Press Studs (illus.)  
Wire Leads

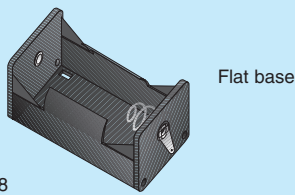
**Manf. Part No. & Anglia Order Code**  
**TCH6C4S**  
**TCH6C4W**

**D CELL** *shown overleaf* > > > >

All dimensions in mm

**D CELL**

ONE CELL

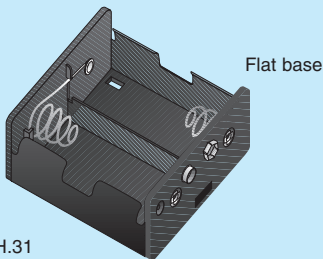


L.69 x W.37 x H.28

Termination Type  
Solder Tags

Manf. Part No. & anglia Order Code  
**TCH1D1T**

TWO CELL - side by side

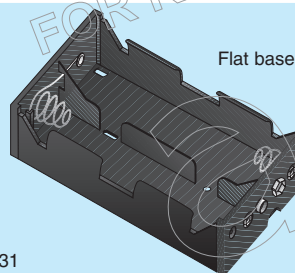


L.71 x W.73 x H.31

Termination Type  
Press Studs

Manf. Part No. & anglia Order Code  
**TCH2D2S**

FOUR CELL - end to end + side by side

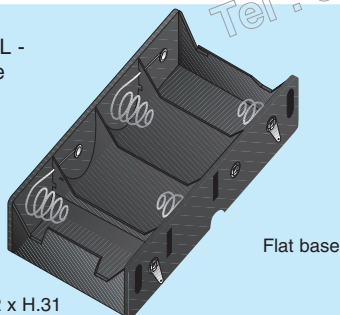


L.133 x W.74 x H.31

Termination Type  
Press Studs

Manf. Part No. & anglia Order Code  
**TCH4D3S**

FOUR CELL - side by side



L.73 x W.142 x H.31

Termination Type  
Solder Tags

Manf. Part No. & anglia Order Code  
**TCH4D2T**

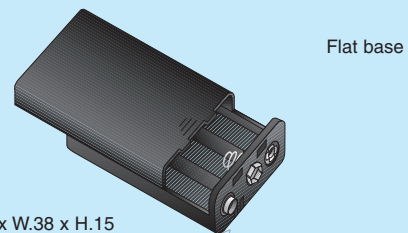
**HIGH QUALITY RANGE**

A small range of battery holders utilising a robust high grade material (ABS). Available in AAA or AA cell size with a choice of cell configuration and termination method on the AA types.

- ◆ Robust moulded bodies
- ◆ High grade material
- ◆ House up to eight batteries

**AAA CELL**

THREE CELL



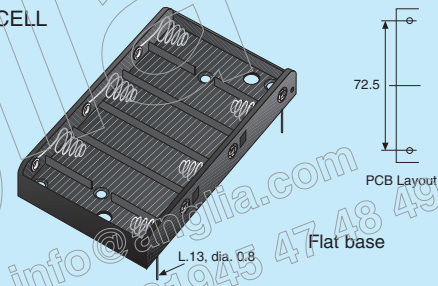
L.54 x W.38 x H.15

Termination Type  
Press Studs

Manf. Part No. & anglia Order Code  
**TCH3A32SH**

**AA CELL**

SIX CELL

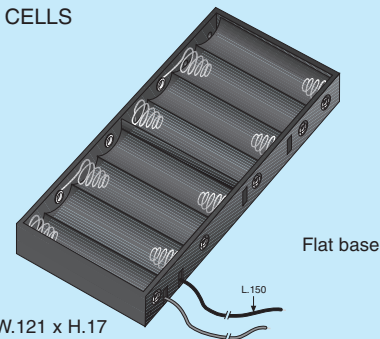


L.57 x W.91 x H.16

Termination Type  
PCB Pins

Manf. Part No. & anglia Order Code  
**TCH6A22PH**

EIGHT CELLS



L.59 x W.121 x H.17

Termination Type  
Wire Leads

Manf. Part No. & anglia Order Code  
**TCH8A22WH**

All dimensions in mm

**PRESS STUD TERMINALS** see page 28 for suitable PP3 battery snaps