

**FEATURES**

- ※Single In-line Packaging saves PCB space
- ※Available in vertical or right angle models

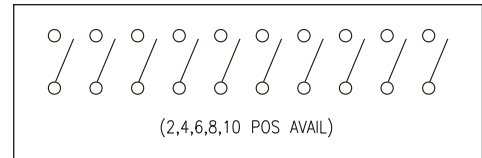
**APPLICATION**

- ※Industrial control
- ※Computers and peripherals
- ※Variety of function controls

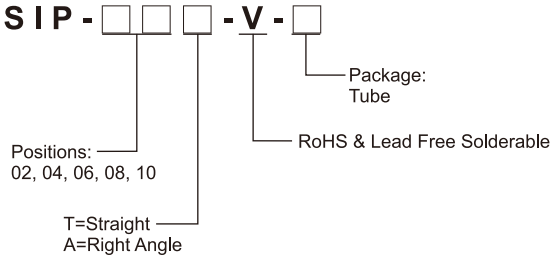
**SPECIFICATION**

|                       |                    |
|-----------------------|--------------------|
| Contact Rating        | 10mA, 5V DC        |
| Contact Resistance    | 100mΩ max.         |
| Insulation Resistance | 100MΩ min. 500V DC |
| Dielectric Strength   | 300V AC/1 minute   |
| Operating Force       | 800gf max.         |
| Operating Life        | 500 cycles         |
| Operating Temp.       | -30°C ~ +80°C      |
| Storage Temp.         | -30°C ~ +80°C      |

**CIRCUIT**



**HOW TO ORDER**

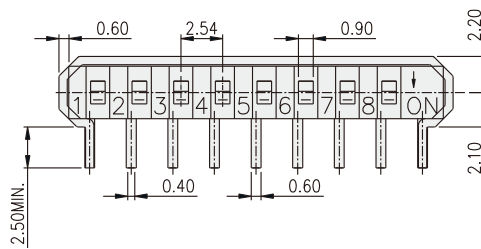


**PACKAGE**

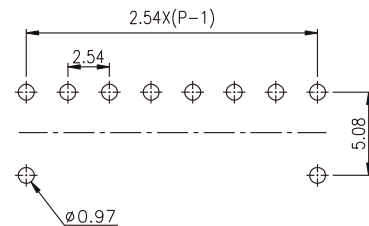
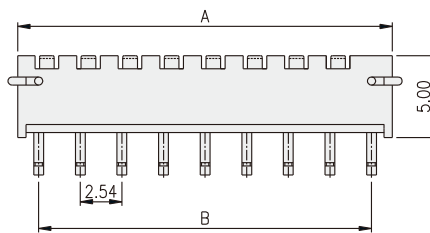
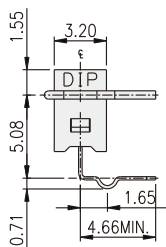
**<Tube>**

|                 |                 |
|-----------------|-----------------|
| SIP-02A: 56 pcs | SIP-02T: 61 pcs |
| SIP-04A: 35 pcs | SIP-04T: 37 pcs |
| SIP-06A: 25 pcs | SIP-06T: 26 pcs |
| SIP-08A: 20 pcs | SIP-08T: 20 pcs |
| SIP-10A: 16 pcs | SIP-10T: 17 pcs |

**SIP-A**



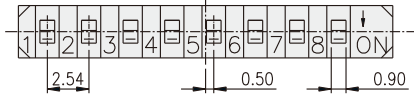
| PART NO. | NO.OF POS. | DIM.A | DIM.B |
|----------|------------|-------|-------|
| SIP-02   | 2          | 7.62  | 5.08  |
| SIP-04   | 4          | 12.70 | 10.16 |
| SIP-06   | 6          | 17.78 | 15.24 |
| SIP-08   | 8          | 22.86 | 20.32 |
| SIP-10   | 10         | 27.94 | 25.40 |



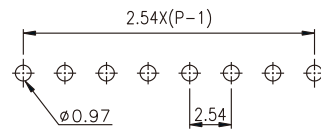
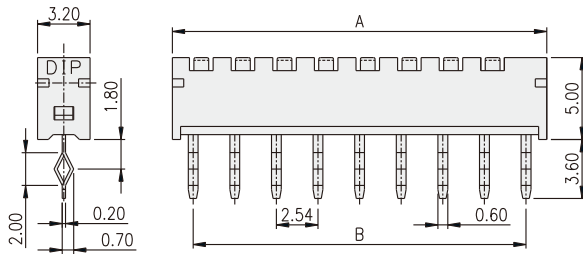
P.C.B. LAYOUT

DIP SWITCH

SIP-T



| PART NO. | NO.OF POS. | DIM.A | DIM.B |
|----------|------------|-------|-------|
| SIP-02   | 2          | 7.62  | 5.08  |
| SIP-04   | 4          | 12.70 | 10.16 |
| SIP-06   | 6          | 17.78 | 15.24 |
| SIP-08   | 8          | 22.86 | 20.32 |
| SIP-10   | 10         | 27.94 | 25.40 |



P.C.B. LAYOUT

DIP SWITCH