

HF 3503A (JA3503A)

DELAYING RELAY



Typical Applications

Delaying control of lamp & radiator

Features

- Solid base design, stable structure
- Maturing circuit, stable and reliable performances
- Surface mounting technology, advanced craftwork

CHARACTERISTICS

Norminal voltage	12VDC
Operating voltage range	9VDC to 16VDC
Contact rating	Resistive: 15A 13.5VDC
Delaying time ¹⁾	9s ± 2s
Electrical endurance	1×10 ⁵ OPS (at nomi. vol.)

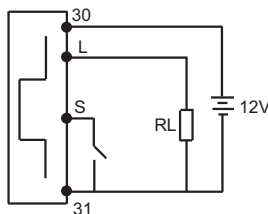
1) When demand of time delay is different from above, please contact Hongfa for more technology support.

Ambient temperature	-40°C to 85°C
Vibration resistance	10Hz to 200Hz 49m/s ²
Shock resistance	196m/s ²
Weight	Approx. 40g
Mechanical data	Cover retention: 250N min. Terminal retention: 100N min.

OUTLINE DIMENSIONS AND WIRING DIAGRAM

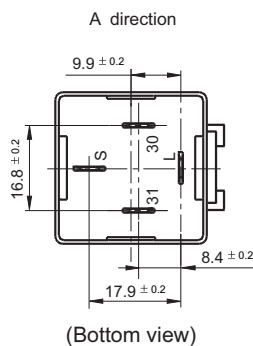
Unit: mm

Wiring Diagram

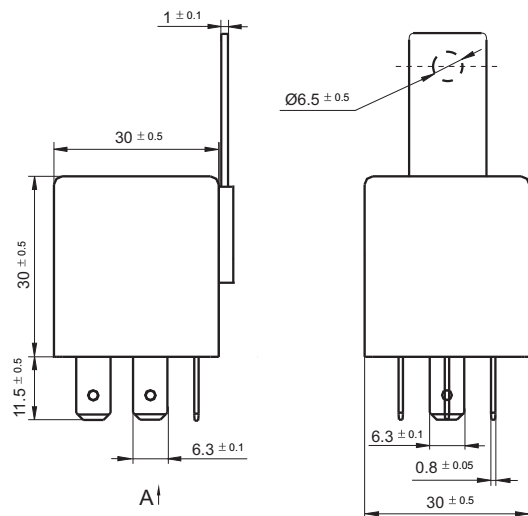


1. As shown in left wiring diagram, for HF3503A, terminal 30 is connected with anode of 12VDC, terminal 31 with cathode of battery, and terminal S with switch, terminal L with load.
2. Once terminal S gets low potential (0VDC to 1.2VDC), contact of inner relay will close, terminal L and 30 will switch on. When the low potential signal remove from terminal S loses, delay signal is sent out, after 9s ± 2s, terminal L and 30 will switch off, for more specific information, please refer to following controlling figure:
3. Triggering time of low potential for terminal S shall be not less than 0.3s.

Terminal Layout



Outline Dimensions



HONGFA RELAY

ISO9001, ISO/TS16949, ISO14001, OHSAS18001, IECQ QC 080000 CERTIFIED

2008 Rev. 1.00